

# Modular Twisted Pair

## Category 7<sub>A</sub> - Patch Cords

### AMP-TWIST 7<sub>A</sub>S to AMP-TWIST 7<sub>A</sub>S Patch Cord

#### FEATURES

- Slim line design for High-Density solutions
- Category 7<sub>A</sub> S/FTP stranded cable
- LSZH sheath
- Black boot on AMP-TWIST 7<sub>A</sub>S plug

**Color:** white

#### ORDERING INFORMATION

Description	Part Number
Pairs: 4; Cat. 7 <sub>A</sub>	Y-1711637-X

*Other lengths on request.*



Y- -X	Length
1- -1	0.5 m
0- -1	1.0 m
0- -2	2.0 m
0- -3	3.0 m
0- -5	5.0 m
1- -0	10.0 m

### AMP-TWIST 7<sub>A</sub>S to RJ-45 Patch Cord

#### FEATURES

- Slim line design for High-Density solutions
- Category 7 S/FTP stranded cable
- LSZH sheath
- Black boot on AMP-TWIST 7<sub>A</sub>S plug

**Color:** white

#### ORDERING INFORMATION

Description	Part Number
Pairs: 4; Cat. 6 <sub>A</sub>	Y-336488-X

*Other lengths on request.*



Y- -X	Length
1- -1	0.5 m
0- -1	1.0 m
0- -2	2.0 m
0- -3	3.0 m
0- -5	5.0 m
1- -0	10.0 m

# Modular Twisted Pair

## Category 7<sub>A</sub> - Patch Cords

### AMP-TWIST 7<sub>A</sub>S (2 Pair) to RJ-45 Patch Cord

#### FEATURES

- Slim line design for High-Density solutions
- Stranded shielded cable
- LSZH sheath
- Black boot on AMP-TWIST 7<sub>A</sub>S plug

**Color:** white

#### ORDERING INFORMATION

Description	Part Number
Pairs: 2 (Ethernet 12/36); Cat. 5E	Y-1711613-X
Pairs: 2 (ISDN 36/45); Cat. 5E	Y-1711618-X

*Other lengths on request.*



Y- -X	Length
1- -1	0.5 m
0- -1	1.0 m
0- -2	2.0 m
0- -3	3.0 m
0- -5	5.0 m
1- -0	10.0 m

### AMP-TWIST 7<sub>A</sub>S Telephone Patch Cord (1 Pair)

#### FEATURES

- Slim line design for High-Density solutions
- RJ-11 to 1pair plug acc. to IEC 61076-3-104
- LSZH sheath
- Black boot

**Color:** black

#### ORDERING INFORMATION

Description	Part Number
Pairs: 1 (Voice Application); Cat. 3	Y-1711623-X

*Other lengths on request.*



Y- -X	Length
1- -1	0.5 m
0- -1	1.0 m
0- -2	2.0 m
0- -3	3.0 m
0- -5	5.0 m
1- -0	10.0 m

# Modular Twisted Pair

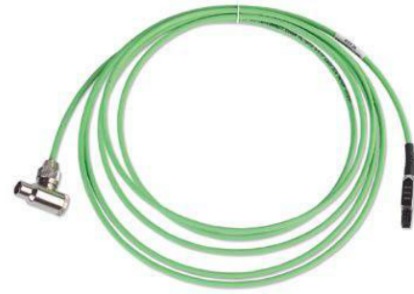
## Category 7<sub>A</sub> - Patch Cords

### AMP-TWIST 7<sub>A</sub> S CATV Patch Cord (1 Pair)

#### FEATURES

- Slim line design for High-Density solutions
- PAL or male F-Series connector with integrated balun to 1 pair plug acc. to IEC 61076-3-104
- Category 7<sub>A</sub> S/FTP stranded cable
- LSZH sheath
- Black boot

**Color:** green



#### ORDERING INFORMATION

Description	Part Number
Pairs: 1 (F-conn with Balun); CATV	Y-1711624-X
Pairs: 1 (Coax with Balun); CATV	Y-1711659-X

Y- -X	Length
1- -1	0.5 m
0- -1	1.0 m
0- -2	2.0 m
0- -3	3.0 m
0- -5	5.0 m
1- -0	10.0 m

*Other lengths on request.*

### AMP-TWIST 7<sub>A</sub> S Single End Patch Cord

#### FEATURES

- Slim line design for High-Density solutions
- Category 7<sub>A</sub> S/FTP cable
- LSZH sheath
- Black boot on AMP-TWIST 7<sub>A</sub> S plug

**Color:** white



#### ORDERING INFORMATION

Description	Part Number
Pairs: 4; Cat. 7 <sub>A</sub> ; Construction: Stranded	Y-1711580-X
Pairs: 4; Cat. 7 <sub>A</sub> ; Construction: Solid	Y-1711787-X

Y- -X	Length
0- -5	5.0 m
1- -4	7.5 m
1- -0	10.0 m
1- -5	15.0 m
2- -0	20.0 m
3- -0	30.0 m

*Other lengths on request.*

# Modular Twisted Pair

## Category 7<sub>A</sub> - Patch Cords

### Category 7<sub>A</sub> ARJ-45 Patch Cord

#### FEATURES

- Ideal for installations in combination with AMP CO Plus ARJ-45 Cat. 7<sub>A</sub>
- Category 7<sub>A</sub> S/FTP stranded cable
- ARJ-45 plug acc. to IEC 60603-7-7
- LSZH sheath

**Color:** white



#### ORDERING INFORMATION

Description	Part Number
ARJ-45 to ARJ-45; Cat. 7 <sub>A</sub>	Y-1711563-X
ARJ-45 to RJ-45; Cat. 6 <sub>A</sub>	Y-1711564-X

Y- -X	Length
0- -1	1.0 m
0- -2	2.0 m
0- -3	3.0 m
0- -5	5.0 m
1- -0	10.0 m

# Modular Twisted Pair

## Category 6<sub>A</sub> - Cable

### Category 7 S/FTP Cable

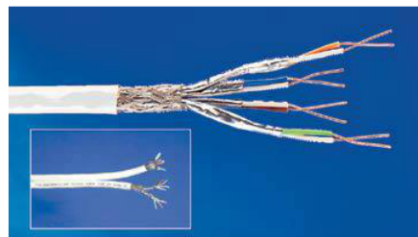
#### FEATURES

- Qualified against IEC 61156-5 Category 7 and EN 50288-4-1
- Individually foiled pairs plus overall copper braid
- AWG 23 solid conductor
- Fire retardant LSZH sheath

**Color:** white

#### ORDERING INFORMATION

Description	Part Number
AWG 23; Type: Simplex; OD: 7.3 mm; Packaging: 1000 m/Reel	57893-1
AWG 23; Type: Duplex; OD: 7.6 x 16.0 mm; Packaging: 500 m/Reel	1711005-1



### Category 7 F/FTP Cable

#### FEATURES

- Qualified against IEC 61156-5 Category 7 and EN 50288-4-1
- Individually foiled pairs plus overall foil shield and drain wire
- AWG 23 solid conductor
- LSZH sheath

**Color:** white

#### ORDERING INFORMATION

Description	Part Number
AWG 23; Type: Simplex; OD: 7.4 mm; Packaging: 500 m/Reel	1711163-1
AWG 23; Type: Duplex; OD: 7.2 x 15.0 mm; Packaging: 500 m/Reel	1711195-1



### Category 7 S/FTP Outdoor Cable

#### FEATURES

- Qualified against IEC 61156-5 Category 7 and EN 50288-4-1 and tested up to 600MHz
- Suitable for 10GBase-T applications
- Can be used for direct burial and cable duct installation
- Individually foiled pairs plus overall copper braid
- Double jacketed:
  - Inner jacket material: LSZH
  - Outer jacket material: PE black, UV resistant
- Moisture barrier (plastic coated aluminum tape) in between jackets
- AWG 23 solid conductor

**Color:** black

#### ORDERING INFORMATION

Description	Part Number
AWG 23; Type: Simplex; OD 11.7 mm; Packaging: 1000 m/Reel	2153161-1



# Modular Twisted Pair

## Category 6<sub>A</sub> - Cable

### Category 6<sub>A</sub> F/UTP Cable AWG 24

#### FEATURES

- Qualified against IEC 61156-5 Category 6<sub>A</sub> and EN 50288-10-1
- Suitable for 10GBase-T applications
- Overall foil shield, embedded in between synthetic tapes, with drain wire
- AWG 24 solid conductor
- LSZH sheath according to IEC 60332-1 fire rating

**Color:** white

#### ORDERING INFORMATION

Description	Part Number
AWG 24; Type: Simplex; OD 7.1mm; Packaging: 500 m/Reel	2153022-3



### Category 6<sub>A</sub> U/UTP Cable AWG 23

#### FEATURES

- Supports 10Gigabit Ethernet to a full 100m up to 500MHz
- UTP cable, qualified against IEC 61156-5 Category 6<sub>A</sub>
- Patented technology with oblique elliptical offset filler to minimise the effect of alien crosstalk and insertion loss
- AWG 23 solid conductor
- LSZH sheath acc. to IEC 60332-1 fire rating

**Color:** blue

#### ORDERING INFORMATION

Description	Part Number
AWG 23; Type: Simplex; OD: 7.62mm - 6.5mm x 8.4mm; Packaging: 305m/Reel	2171014-1



# Modular Twisted Pair

## Category 6<sub>A</sub> - Jacks

### AMP-TWIST 6<sub>A</sub> S SL Jack

#### FEATURES

- Class E<sub>A</sub> / Category 6<sub>A</sub> as per ISO/IEC 11801 Ed.2 Amd.2
- Termination time less than 1 minute using TE's AWC technique
- Easiest installation with only 2 parts
- Patented shield clamp with integrated strain relief
- Available with or without dust cover
- Optional colored dust covers available



#### ORDERING INFORMATION

Description	Part Number
Cat. 6 <sub>A</sub> RJ-45 die-cast Jack without dust cover, 180° cable exit	1711716-1
Cat. 6 <sub>A</sub> RJ-45 die-cast Jack with dust cover, 180° cable exit	1711592-1
Colored dust cover (bag of 50 pieces); Color: blue	1-1711691-6
Colored dust cover (bag of 50 pieces); Color: red	1-1711691-7
Colored dust cover (bag of 50 pieces); Color: yellow	1-1711691-8
Colored dust cover (bag of 50 pieces); Color: green	1-1711691-9

### Q- Jack (STP)

#### FEATURES

- Class E<sub>A</sub> / Category 6<sub>A</sub> as per ISO/IEC 11801 Ed.2 Amd.2
- Suitable for Q-Jack Patch Panels (Page 247)
- Punch down termination onto LSA-PLUS contacts to ensure swift installation
- Shielded cap ensures full 360° bonding and grounding
- Universal wiring - T568 A or B wiring pattern



#### ORDERING INFORMATION

Description	Part Number
Cat. 6 <sub>A</sub> RJ-45 shielded Jack without dust cover (blister pack of 12 units); Color: black (RAL 9005)	300001743975

### RJ45 STP KM8 Modular Jacks

#### FEATURES

- Class E<sub>A</sub> / Category 6<sub>A</sub> as per ISO/IEC 11801 Ed.2 Amd.2
- Keystone design ensures compatibility with a range of faceplates and adaptors
- KM8 design provide built-in conductor management
- LSA-PLUS quick connection technique with highly reliable wire termination method
- Shielding clamp ensures full 360° bonding and grounding
- Universal wiring - T568 A or B wiring pattern



#### ORDERING INFORMATION

Description	Part Number
Cat. 6 <sub>A</sub> RJ-45 shielded Jack without dust cover; Color: white (RAL 9010)	6830 1 811-01
Cat. 6 <sub>A</sub> RJ-45 shielded Jack without dust cover; Color: black (RAL 9005)	6830 1 811-04

# Modular Twisted Pair

## Category 6<sub>A</sub> - Jacks

### AMP-TWIST 6<sub>A</sub>U SL Jack

#### FEATURES

- Class E<sub>A</sub> as per ISO/IEC 11801 Ed.2 Amd.2
- Termination time less than 1 minute using TE's AWC technique
- Easiest installation with only 2 parts
- Superior technology to reduce alien crosstalk
- Available with or without dust cover
- UL listed
- Universal wiring - T568 A or B wiring pattern
- Several colors available on demand



X	Color
-1	Almond
-2	Black
-4	Gray
-5	Orange
-6	Blue
-7	Red
-8	Yellow
-9	Green

#### ORDERING INFORMATION

Description	Part Number
Cat. 6 <sub>A</sub> RJ-45 unshielded Jack without dust cover, 180° cable exit	1933476-X
Cat. 6 <sub>A</sub> RJ-45 unshielded Jack with dust cover, 180° cable exit	2111676-X

### Q- Jack (UTP)

#### FEATURES

- Class E<sub>A</sub> / Category 6<sub>A</sub> as per ISO/IEC 11801 Ed.2 Amd.2
- Suitable for Q-Jack Patch Panels (Page 247)
- Punch down termination onto LSA-PLUS contacts to ensure swift installation
- Universal wiring - T568 A or B wiring pattern



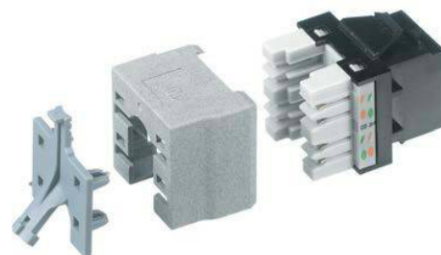
#### ORDERING INFORMATION

Description	Part Number
Cat. 6 <sub>A</sub> RJ-45 unshielded Jack without dust cover (blister pack of 12 units); Color: black (RAL 9005)	300001743978

### RJ45 UTP Modular Jack

#### FEATURES

- Class E<sub>A</sub> / Category 6<sub>A</sub> as per ISO/IEC 11801 Ed.2 Amd.2
- Keystone design ensures compatibility with a range of faceplates and adaptors
- Punch down termination onto LSA-PLUS contacts to ensure swift installation
- Cap with metallic particles to mitigate alien crosstalk
- Universal wiring - T568 A or B wiring pattern



#### ORDERING INFORMATION

Description	Part Number
Cat. 6 <sub>A</sub> RJ-45 unshielded Jack without dust cover; Color: white (RAL 9010)	6830 1 885-01
Cat. 6 <sub>A</sub> RJ-45 unshielded Jack without dust cover; Color: black (RAL 9005)	6830 1 885-04



# Modular Twisted Pair

## Category 6<sub>A</sub> - Consolidation Point

### AMP-TWIST 6<sub>A</sub>S Consolidation Point Transition Cable Assemblies

#### FEATURES

- Assembly to connect the work area outlet with the consolidation or transition point
- Saves time and money on moves, adds and changes
- According to ISO/IEC 11801
- Category 7 F/FTP solid cable according to IEC 61156-5 and EN 50288-4-1
- LSZH sheath
- Universal wiring

**Color:** white



#### ORDERING INFORMATION

Description	Part Number
AMP-TWIST 6 <sub>A</sub> S SL jack w/o dust cover to RJ-45 plug; Class E <sub>A</sub>	Y-1711825-X
AMP-TWIST 6 <sub>A</sub> S SL jack with dust cover to RJ-45 plug; Class E <sub>A</sub>	Y-1711851-X

Y- -X	Length
0- -5	5.0 m
1- -4	7.5 m
1- -0	10.0 m
1- -5	15.0 m
2- -0	20.0 m
3- -0	30.0 m

## Modular Twisted Pair

### Category 6<sub>A</sub> - Patch Cords

#### Category 6<sub>A</sub> S/FTP Patch Cord RJ-45 LSZH

##### FEATURES

- Category 7 S/FTP stranded cable
- LSZH sheath
- Color-matched snagless boots



##### ORDERING INFORMATION

Description	Part Number	Y- -X	Length
Color: white	Y-1711815-X	1- -1	0.5 m
Color: blue	Y-1711816-X	0- -1	1.0 m
Color: gray	Y-1711817-X	0- -2	2.0 m
Color: yellow	Y-1711818-X	0- -3	3.0 m
Color: red	Y-1711819-X	0- -5	5.0 m
Color: green	Y-1711820-X	1- -0	10.0 m

Other colors and lengths are available upon request.

#### Category 6<sub>A</sub> UTP Patch Cord RJ-45 LSZH

##### FEATURES

- Supports 10 Gigabit Ethernet to a full 100m
- Exceeds the requirements of IEEE 802.3an (10GBASE-T) and ISO/IEC 11801:2002 amendment/channel requirements
- Superior cable flexibility from stranded cores
- Boot maintains correct bend radius to ensure maximum performance



-XX	Length	-XX	Length	-XX	Length
-04	1.0 m	-10	3.0 m	-25	7.5 m
-07	2.0 m	-15	5.0 m	-33	10 m

##### ORDERING INFORMATION

Description	Cable Color	Cable Type	Part Number
Augmented Category 6 LSZH Patch Cord RJ45 plug to RJ45 plug, T568B	Blue	LSZH UTP	6645-2-827-XX

Other colors and lengths are available upon request.

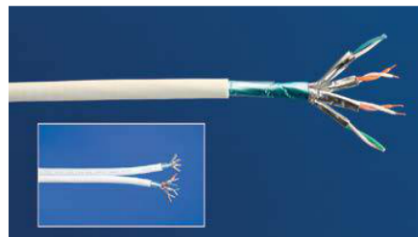
# Modular Twisted Pair

## Category 6 - Cable

### Category 6 F/FTP Cable

#### FEATURES

- Qualified against IEC 61156-5 Category 6 and EN 50288-5-1
- Individually foiled pairs plus overall foil shield
- AWG 23 solid conductor
- LSZH sheath



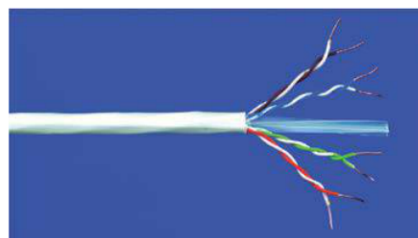
#### ORDERING INFORMATION

Description	Color	Part Number
AWG 23; Type: Simplex; OD: 7.3 mm; Packaging: 500 m/Reel	White	1711007-1
AWG 23; Type: Duplex; OD: 7.6 x 15.5 mm; Packaging: 500 m/Reel	White	1711008-1

### Category 6 U/UTP Cable

#### FEATURES

- 250 MHz Category 6 U/UTP Cable
- Qualified against IEC 61156-5 Category 6 and EN 50288-6-1
- Cross web filler to separate the pairs



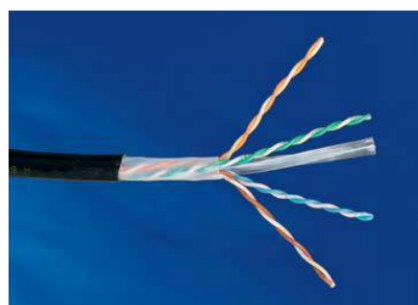
#### ORDERING INFORMATION

Description	Color	Part Number
Sheathing: PVC; Type: Simplex; OD 6.0 mm; Packaging: 305 m/Reel-In-A-Box	White	219584-2
Sheathing: PVC; Type: Simplex; OD 6.0 mm; Packaging: 1000 m/Reel	White	219584-3
Sheathing: LSZH; Type: Simplex; OD 6.0 mm; Packaging: 305 m/Reel-In-A-Box	White	219585-2
Sheathing: LSZH; Type: Simplex; OD 6.0 mm; Packaging: 1000 m/Reel	White	219585-3
Sheathing: LSZH; Type: Duplex; OD 6.2 x 13.0 mm; Packaging: 500 m/Reel	White	1711053-1
Sheathing: LSFRZH; Type: Simplex; OD: 6.3 mm; Packaging: 500 m/Reel	Black	1-1711166-7

### Category 6 U/UTP Outdoor Cable

#### FEATURES

- 250 MHz Category. 6 U/UTP Cable
- Double jacketed:
  - inner jacket material: PE
  - outer jacket material: LSZH
- AWG 24
- For aerial use
- Suitable in an IP65 environment



#### ORDERING INFORMATION

Description	Part Number
Sheathing: LSZH; OD: 7.2 mm; Packaging: 500 m/Reel	1711006-1

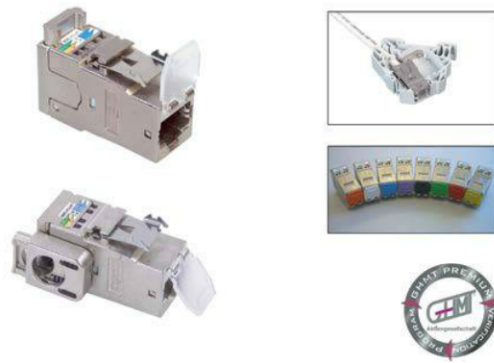
# Modular Twisted Pair

## Category 6 - Jacks

### AMP-TWIST 6S SL Jack

#### FEATURES

- Category 6 as per ISO/IEC 11801 Ed.2 Amd.2
- Class E<sub>A</sub> as per ISO/IEC 11801 Ed.2 Amd.1
- Termination time less than 1 minute using TE's AWC technique
- Easiest installation with only 2 parts
- Patented shield clamp with integrated strain relief
- Available with or without dust cover
- Available with rear (180°) or side (90°) cable exit
- Available DIN Rail Kit
- Optional colored dust covers available



#### ORDERING INFORMATION

Description	Part Number
Cat. 6 RJ-45 die-cast Jack without dust cover, 180° cable exit	1711342-1
Cat. 6 RJ-45 die-cast Jack without dust cover, 90° cable exit	1711343-1
Cat. 6 RJ-45 die-cast Jack with dust cover, 180° cable exit	1711160-1
Cat. 6 RJ-45 die-cast Jack with dust cover, 90° cable exit	1711295-1
Colored dust cover (bag of 50 pieces); Color: blue	1-1711691-6
Colored dust cover (bag of 50 pieces); Color: red	1-1711691-7
Colored dust cover (bag of 50 pieces); Color: yellow	1-1711691-8
Colored dust cover (bag of 50 pieces); Color: green	1-1711691-9

### RJ45 STP KM8 Modular Jack

#### FEATURES

- Class E / Category 6 as per ISO/IEC 11801 Ed.2 Amd.2
- Keystone design ensures compatibility with a range of faceplates and adaptors
- KM8 design provide built-in conductor management
- LSA-PLUS quick connection technique with highly reliable wire termination method
- Shielding clamp ensures full 360° bonding and grounding
- Universal wiring - T568 A or B wiring pattern



#### ORDERING INFORMATION

Description	Part Number
Cat. 6 RJ-45 Shielded Jack without dust cover; Color: white (RAL 9010)	6830 1 810-01
Cat. 6 RJ-45 Shielded Jack without dust cover; Color: black (RAL 9005)	6830 1 810-04

# Modular Twisted Pair

## Category 6 - Jacks

### SL Series 110Connect Jacks (STP)

#### FEATURES

- Category 6 Pyramid Tested
- Universal wiring - T568 A or B wiring pattern



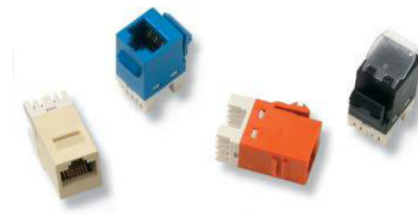
#### ORDERING INFORMATION

Description	Part Number
Cat. 6 RJ-45 shielded Jack without dust cover, 180° cable exit	1375188-1

### SL Series 110Connect Jacks (UTP)

#### FEATURES

- SlimLine (SL) Series: Thin profile improves outlet density
- Category 6 Pyramid Tested
- Available with or without dust cover
- 90° or 180° cable dress for easy termination
- Bend-limiting strain relief included
- UL listed
- Universal wiring - T568 A or B wiring pattern
- Several colors available on demand



#### ORDERING INFORMATION

Description	Part Number
Cat. 6 RJ-45 unshielded Jack without dust cover	Y-1375055-X
Cat. 6 RJ-45 unshielded Jack with dust cover	Y-1375187-X

Y- -X	Color
0- -1	Beige
0- -2	Black
0- -3	White
0- -6	Blue
0- -7	Red

# Modular Twisted Pair

## Category 6 - Jacks

---

### RJ45 UTP KM8 Modular Jack

#### FEATURES

- Class E / Category 6 as per ISO/IEC 11801 Ed.2 Amd.2
- Keystone design ensures compatibility with a range of faceplates and adaptors
- KM8 design provide built-in conductor management
- LSA-PLUS quick connection technique with highly reliable wire termination method
- Universal wiring - T568 A or B wiring pattern
- Several colors available on demand



#### ORDERING INFORMATION

Description	Part Number
Cat. 6 RJ-45 Unshielded Jack without dust cover; Color: white (RAL 9010)	6830 1 800-01
Cat. 6 RJ-45 Unshielded Jack without dust cover; Color: black (RAL 9005)	6830 1 800-04

### SL Series Modular Coupler

#### FEATURES

- Straight Category 6 coupler
- Compact coupler for two modular plugs
- SL Series: Thin profile improves outlet density



#### ORDERING INFORMATION

Description	Part Number
Cat. 6 RJ-45 unshielded Coupler	2111123-1
Cat. 6 RJ-45 shielded Coupler	2111124-1

# Modular Twisted Pair

## Category 6 - Outlets

---

### Category 6 DIN Dual Floor Outlet

#### FEATURES

- Category 6 Pyramid Tested
- Flat die-cast design for easy floor box mounting
- 50 x 50 mm faceplate universal fit
- LSA-PLUS tool compatible enhanced 110 IDC blocks
- Universal label for TIA 568A or TIA 568B wiring
- Protected PCB



#### ORDERING INFORMATION

Description	Part Number
Floor outlet; Ports: 2; Color: almond (RAL 1013)	336539-1
Floor outlet; Ports: 2; Color: pure white (RAL 9010)	2-336539-1

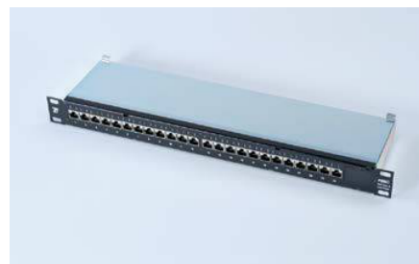
# Modular Twisted Pair

## Category 6 - Patch Panels

### Category 6 24 Ports Shielded Patch Panel

#### FEATURES

- 19", 1U, RJ-45 Patch Panel with 24 ports
- Class E<sub>A</sub> Permanent Link and Category 6 Pyramid Tested
- Prepared for AMPTRAC upgrade
- Enhanced 110 IDC blocks compatible with 110C Impact or LSA-PLUS Insertion tool
- Rear cable management
- Cover adapts to different cable diameters via variable snap-in position
- Shield connection separated from strain relief
- Universal wiring - T568 A or B wiring pattern
- Including grounding bolt
- Protected PCB



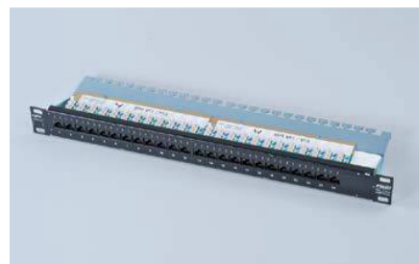
#### ORDERING INFORMATION

Description	Part Number
Cat. 6 24 Ports Shielded Patch Panel; Color: black (RAL 9005)	1644042-2
Cat. 6 24 Ports Shielded Patch Panel; Color: light grey (RAL 7035)	1644042-3

### Category 6 24 Ports Unshielded Patch Panel

#### FEATURES

- 19", 1U, RJ-45 Patch Panel with 24 ports
- Category 6 Pyramid Tested
- Prepared for AMPTRAC upgrade
- Enhanced 110 IDC blocks compatible with 110C Impact or LSA-PLUS Insertion tool
- Rear cable management
- Universal wiring - T568 A or B wiring pattern
- Including grounding bolt
- Protected PCB



#### ORDERING INFORMATION

Description	Part Number
Cat. 6 24 Ports Unshielded Patch Panel; Color: black (RAL 9005)	1711147-2



# Modular Twisted Pair

## Category 6 - Patch Panels

---

### MiniPods

#### FEATURES

- External mounting points
- Can be passed through standard floor grommets
- Incorporated dust protection on each port
- Pre-loaded with modular connectivity (including CL jacks)
- 3, 4 and 6 port versions available

#### ORDERING INFORMATION

Description	Part Number
MiniPod Cat. 6 CL UTP 3 port	6540 1 684-03
MiniPod Cat. 6 CL UTP 4port	6540 1 678-04
MiniPod Cat. 6 CL UTP 6 port	6540 1 678-06



## Modular Twisted Pair

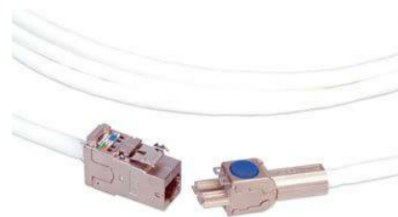
### Category 6 - Consolidation Point

#### AMP-TWIST 6S to AMP-TWIST 7<sub>A</sub>S Consolidation Point Transition Cable Assembly

##### FEATURES

- Assembly to connect the work area outlet with the consolidation or transition point
- Saves time and money on moves, adds and changes
- According to ISO/IEC 11801
- Category 7 S/FTP solid cable acc. to IEC 61156-5 and EN 50288-4-1
- LSFRZH sheath
- Universal wiring

**Color:** white



##### ORDERING INFORMATION

Description	Part Number
AMP-TWIST 6S SL jack w/o dust cover to AMP-TWIST 7 <sub>A</sub> S plug; Class E <sub>A</sub>	Y-1711666-X
AMP-TWIST 6S SL jack with dust cover to AMP-TWIST 7 <sub>A</sub> S plug; Class E <sub>A</sub>	Y-1711777-X

Y- -X	Length
0- -5	5.0 m
1- -4	7.5 m
1- -0	10.0 m
1- -5	15.0 m
2- -0	20.0 m
3- -0	30.0 m

#### Unshielded Consolidation Point Transition Cable Assemblies

##### FEATURES

- Assembly to connect the work area outlet with the consolidation or transition point (SL 110C Jack to modular plug)
- Meets ISO/IEC 11801 and EN 50173-1
- 4 pair solid U/UTP cable
- LSZH sheath
- Universal wiring

**Color:** white



##### ORDERING INFORMATION

Description	Part Number
Cat. 6; Class E	Y-1711027-X

Y- -X	Length
0- -5	5.0 m
1- -4	7.5 m
1- -0	10.0 m
1- -5	15.0 m
2- -0	20.0 m

# Modular Twisted Pair

## Category 6 - Patch Cords

---

### Modular Solid Core Patch Cords

#### FEATURES

- Performance exceeding Category 6 specifications up to 250MHz
- Wired to T568-B
- Complete with integrated strain relief to protect terminations within the plug
- Fully interoperable and backwards compatible
- Maximum throughput, reliability and performance in your IT network
- Covered by the System Warranty



#### ORDERING INFORMATION

Description	Length	Part Number
Modular White LSZH UTP	20m	2-1711171-0
	30m	3-1711171-0
	40m	4-1711171-0
	50m	5-1711171-0

*Other colors and lengths are available upon request*

# Modular Twisted Pair

## Category 6 - Patch Cords

### Category 6 UTP Patch Cord RJ-45

#### FEATURES

- Support of POE and POE+
- Slim-line plug
- Transparent, short boot
- Universal wiring scheme (B-wiring)
- 4 pairs of AWG 24 stranded copper wires
- Jacket material complies to LSZH overall diameter: 5,4 mm ( $\pm$  0,3mm)



#### ORDERING INFORMATION

Description	Cable Color	Part Number	Y-	-X	Length
Category 6 UTP Patch Cord RJ-45	White	Y-1711990-X	0-	-1	1.0m
	Blue	Y-1711991-X	0-	-2	2.0m
	Grey	Y-1711992-X	0-	-3	3.0m
	Yellow	Y-1711993-X	0-	-5	5.0m
	Red	Y-1711994-X	1-	-0	10m
	Green	Y-1711995-X			
	Black	Y-1711996-X			
	Orange	Y-2153217-X			

*Other lengths on request.*

# Modular Twisted Pair

## Category 6 - Patch Cords

### Category 6 S/FTP Patch Cord RJ-45 LSZH

#### FEATURES

- Category 7 S/FTP stranded cable
- LSZH sheath
- Color-matched snagless boots
- Universal B-wiring



#### ORDERING INFORMATION

Description	Part Number
Color: white	Y-959385-X
Color: gray	Y-1711076-X
Color: green	Y-1711077-X
Color: yellow	Y-1711078-X
Color: blue	Y-1711079-X

Other colors and lengths are available upon request.

### Category 6 U/UTP Patch Cord RJ-45 LSZH

#### FEATURES

- Category 6 according to ISO/IEC 11801 and EN-50173-1
- 4 Pair stranded U/UTP cable
- LSZH sheath
- Color-matched snagless boots
- Universal wiring



#### ORDERING INFORMATION

Description	Part Number	Y- -X	Length
Color: white	Y-1711091-X	1- -1	0.5 m
Color: gray	Y-1711093-X	0- -1	1.0 m
Color: blue	Y-1711094-X	0- -2	2.0 m
Color: green	Y-1711095-X	0- -3	3.0 m
Color: red	Y-1711096-X	0- -5	5.0 m
		1- -0	10.0 m

Other colors and lengths are available upon request.

# Modular Twisted Pair

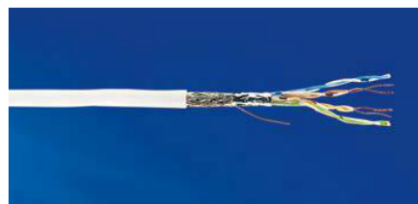
## Category 5e - Cables

### Category 5e SF/UTP Cable

#### FEATURES

- Qualified against IEC 61156-5 Category 5e and EN 50288-2-1
- Overall copper braid plus foil shield
- Very low delay skew, suitable for 1000Base-T
- AWG 24 solid conductor

**Color:** white



#### ORDERING INFORMATION

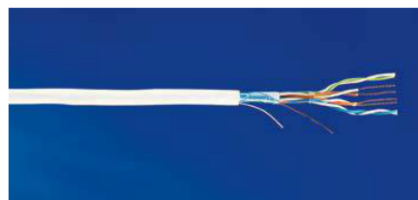
Description	Part Number
Sheathing: LSZH; Type: Simplex; OD 6.5 mm; Packaging: 500 m/Reel	219484-2

### Category 5e F/UTP Cable

#### FEATURES

- Qualified against IEC 61156-5 Category 5e and EN 50288-2-1
- Overall foil shield with drain wire
- Very low delay skew, suitable for 1000Base-T
- AWG 24 solid conductor

**Color:** white



#### ORDERING INFORMATION

Description	Part Number
Sheathing: PVC; Type: Simplex; OD 6.2 mm; Packaging: 305 m, Pull-box	219413-2
Sheathing: PVC; Type: Simplex; OD 6.2 mm; Packaging: 1000 m/Reel	219413-3
Sheathing: LSZH; Type: Simplex; OD 6.2 mm; Packaging: 305 m, Pull-box	219420-2
Sheathing: LSZH; Type: Simplex; OD 6.2 mm; Packaging: 1000 m/Reel	219420-3
Sheathing: LSZH; Type: Duplex; OD 5.9 x 12.2 mm; Packaging: 500 m/Reel	136816-1

# Modular Twisted Pair

## Category 5e - Cables

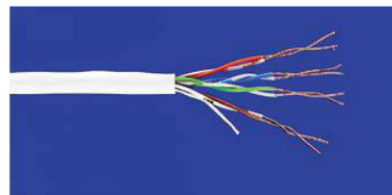
---

### Category 5e U/UTP Cable

#### FEATURES

- 100 MHz Category 5e UTP Cable
- AWG 24

**Color:** white



#### ORDERING INFORMATION

Description	Part Number
Sheathing: PVC; Type: Simplex; OD 5.1 mm; Packaging: 305 m, Pull-Box	57535-2
Sheathing: PVC; Type: Simplex; OD 5.1 mm; Packaging: 1000 m/Reel	57535-3
Sheathing: LSZH; Type: Simplex; OD 5.1 mm; Packaging: 305 m, Pull-Box	57538-2
Sheathing: LSZH; Type: Simplex; OD 5.1 mm; Packaging: 1000 m/Reel	57538-3
Sheathing: LSZH; Type: Duplex; OD 5.5 x 11.5 mm; Packaging: 500 m/Reel	1711043-1

### 25 Pair Category 5e PowerSum Backbone Cable

#### FEATURES

- Category 5e UTP Backbone Cable
- 25 Pair Construction
- AWG 24
- UL listed

**Color:** white



#### ORDERING INFORMATION

Description	Part Number
Sheathing: CMR; OD: 13.0 mm; Packaging: 305 m/Reel	1499418-1

# Modular Twisted Pair

## Category 5e - Jacks

### SL Series 110Connect Jacks (STP)

#### FEATURES

- Universal wiring-T568 A or B wiring pattern
- Category 5e

#### ORDERING INFORMATION

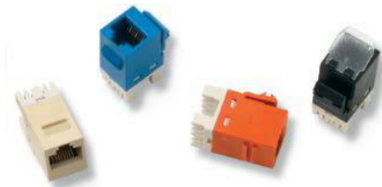
Description	Part Number
Cat. 5e RJ-45 shielded Jack without dust cover, 180° cable exit	1375189-1



### SL Series 110Connect Jacks (UTP)

#### FEATURES

- SlimLine (SL) Series: Thin profile improves outlet density
- Category 5e
- Available with or without dust cover
- 90° or 180° cable dress for easy termination
- Bend-limiting strain relief included
- UL listed
- Universal wiring - T568 A or B wiring pattern
- Several colors available on demand



#### ORDERING INFORMATION

Description	Part Number
Cat. 5e RJ-45 unshielded Jack without dust cover	Y-1375191-X
Cat. 5e RJ-45 unshielded Jack with dust cover	Y-1375190-X

Y- -X	Color
0- -1	Beige
0- -2	Black
0- -3	White
0- -6	Blue
0- -7	Red



# Modular Twisted Pair

## Category 5e - Jacks

---

### SL Series Modular Coupler

#### FEATURES

- Straight Category 5e coupler
- Compact coupler for two modular plugs
- SL Series: Thin profile improves outlet density



#### ORDERING INFORMATION

Description	Part Number
Cat. 5e RJ-45 unshielded Coupler	2111121-1
Cat. 5e RJ-45 shielded Coupler	2111122-1

# Modular Twisted Pair

## Category 5e - Patch Panels

---

### Category 5e 24 Ports Shielded Patch Panel

#### FEATURES

- 19", 1U, RJ-45 Patch Panel with 24 ports
- Category 5e
- Available as LSA-PLUS and 110Connect Version
  - LSA-PLUS Version: Enhanced LSA-PLUS IDC blocks compatible with LSA-PLUS Insertion tool
  - 110Connect Version: Enhanced 110C IDC blocks compatible with 110C Impact tool and LSA-PLUS Insertion tool
- Rear cable management
- Shield connection separated from strain relief
- Universal wiring - T568 A or B wiring pattern
- Including grounding bolt
- Protected PCB

**Color:** black (RAL 9005)



#### ORDERING INFORMATION

Description	Part Number
Cat. 5e 24 Ports Shielded Patch Panel with 110C IDC blocks	336671-2
Cat. 5e 24 Ports Shielded Patch Panel with LSA-PLUS IDC blocks	7022 1 015-24

# Modular Twisted Pair

## Category 5e - Patch Panels

### Category 5e 6Block Unshielded Patch Panel

#### FEATURES

- 19", RJ-45 Patch Panel with 24 (1U) or 48 (2U) ports
- Category 5e
- Enhanced 110 IDC blocks compatible with 110C Impact or LSA-PLUS Insertion tool
- Universal wiring - T568 A or B wiring pattern

**Color:** black (RAL 9005)



#### ORDERING INFORMATION

Description	Part Number
Cat. 5e 6Block Unshielded Patch Panel; N° of Ports: 24	406330-1
Cat. 5e 6Block Unshielded Patch Panel; N° of Ports: 48	406331-1

### Category 5e 24 Ports Unshielded Patch Panel

#### FEATURES

- 19", 1U, RJ-45 Patch Panel with 24 ports
- Category 5e
- Enhanced LSA-PLUS IDC blocks compatible with LSA-PLUS Insertion tool
- Rear cable management
- Universal wiring - T568 A or B wiring pattern
- Including grounding bolt
- Protected PCB

**Color:** black (RAL 9005)



#### ORDERING INFORMATION

Description	Part Number
Cat. 5e 24 Ports Unshielded Patch Panel	6527 1 607-24

# Modular Twisted Pair

## Category 5e - Patch Panels

---

### MiniPods

#### FEATURES

- External mounting points
- Can be passed through standard floor grommets
- Incorporated dust protection on each port
- Pre-loaded with modular connectivity (including CL jacks)
- 4 and 6 port versions available



#### ORDERING INFORMATION

Description	Part Number
MiniPod Cat. 5e CL UTP 4 port	6540 1 677-04
MiniPod Cat. 5e CL UTP 6 port	6540 1 677-06

# Modular Twisted Pair

## Category 5e - Consolidation Point

---

### Unshielded Consolidation Point Transition Cable Assemblies

#### FEATURES

- Assembly to connect the work area outlet with the consolidation or transition point (SL 110C Jack to modular plug)
- Meets ISO/IEC 11801 and EN 50173-1
- 4 pair solid U/UTP cable
- LSZH sheath
- Universal wiring



**Color:** white

#### ORDERING INFORMATION

Description	Part Number
Cat. 5e; Class D	Y-1711040-X

Y- -X	Length
0- -5	5.0 m
1- -4	7.5 m
1- -0	10.0 m
1- -5	15.0 m
2- -0	20.0 m

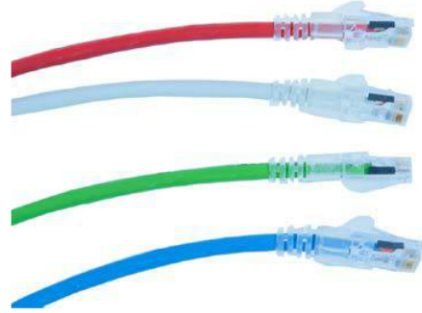
# Modular Twisted Pair

## Category 5e - Patch Cords

### Category 5e UTP Stranded Patch Cord RJ-45

#### FEATURES

- Support of POE and POE+
- Slim-line plug
- Transparent, short boot
- Universal wiring scheme (B-wiring)
- 4 pairs of AWG 24 stranded copper wires
- Available with LSZH and PVC jacket material  
overall diameter: 5,2 mm (± 0,3mm)



#### ORDERING INFORMATION

Description	Color	Part Number (LSZH jacket)	Part Number (PVC jacket)	Y-	-X	Length
Category 5e UTP Stranded Patch Cord RJ-45	White	Y-2153241-X	Y-2153242-X	0-	-1	1.0m
	Blue	Y-2153275-X	Y-2153282-X	0-	-2	2.0m
	Grey	Y-2153278-X	Y-2153284-X	0-	-3	3.0m
	Yellow	Y-2153277-X	Y-2153283-X	0-	-5	5.0m
	Red	Y-2153273-X	Y-2153280-X	1-	-0	10m
	Green	Y-2153274-X	Y-2153281-X			
	Black	Y-2153279-X	-			
	Orange	Y-2153276-X	-			

*Other lengths on request.*

# Modular Twisted Pair

## Category 5e - Patch Cords

---

### Category 5e UTP Solid Patch Cord RJ-45

#### FEATURES

- Support of POE and POE+
- Slim-line plug
- Transparent, short boot
- Universal wiring scheme (B-wiring)
- 4 pairs of AWG 24 solid copper wires
- LSZH jacket material overall diameter: 5,0 mm ( $\pm$  0,3mm)



#### ORDERING INFORMATION

Description	Color	Part Number	Y-	-X	Length
Category 5e UTP Solid Patch Cord RJ-45	White	Y-2153240-X	0-	-1	1,0m
	Blue	Y-2153285-X	0-	-5	5,0m
	Orange	Y-2153286-X	1-	-0	10,0m
			2-	-0	20,0m
			3-	-0	30,0m

*Other lengths on request.*

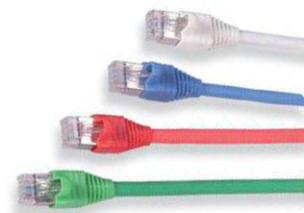
# Modular Twisted Pair

## Category 5e - Patch Cords

### Category 5e F/UTP Patch Cord

#### FEATURES

- Category 5e according to ISO/IEC 11801 and EN-50173-1
- 4 Pair stranded F/UTP cable
- LSZH sheath
- Color-matched snagless boots
- Universal wiring



#### ORDERING INFORMATION

Description	Part Number
F/UTP; Color: gray	Y-959305-X
F/UTP; Color: green	Y-959306-X
F/UTP; Color: yellow	Y-959307-X
F/UTP; Color: blue	Y-959308-X
F/UTP; Color: red	Y-959309-X
F/UTP; Color: white	Y-1644077-X

Y- -X	Length
1- -1	0.5 m
0- -1	1.0 m
0- -2	2.0 m
0- -3	3.0 m
0- -5	5.0 m
1- -0	10.0 m

Other colors and lengths are available upon request

### Category 5e U/UTP Patch Cord RJ-45 LSZH

#### FEATURES

- Category 5e according to ISO/IEC 11801 and EN-50173-1
- 4 Pair stranded U/UTP cable
- LSZH sheath
- Color-matched snagless boots
- Universal wiring



#### ORDERING INFORMATION

Description	Part Number
Color: white	Y-1644076-X
Color: red	Y-1711028-X
Color: green	Y-1711034-X
Color: blue	Y-1711035-X
Color: gray	Y-1711038-X

Y- -X	Length
1- -1	0.5 m
0- -1	1.0 m
0- -2	2.0 m
0- -3	3.0 m
0- -5	5.0 m
1- -0	10.0 m

Other colors and lengths are available upon request



# Modular Twisted Pair

## Voice - Backbone Cable

---

### 25 Pair Category 5e PowerSum Backbone Cable

#### FEATURES

- Category 5e UTP Backbone Cable
- 25 Pair Construction
- AWG 24
- UL listed

**Color:** white



#### ORDERING INFORMATION

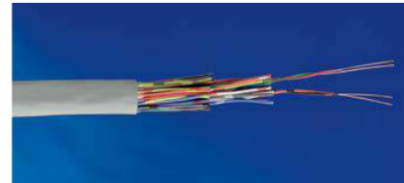
Description	Part Number
Sheathing: CMR; OD: 13.0 mm; Packaging: 305 m/Reel	1499418-1

### Multi-Pair Category 3 Backbone Cable

#### FEATURES

- Category 3 Telephone Backbone Cable
- AWG 24
- LSZH Jacket

**Color:** white



#### ORDERING INFORMATION

Description	Part Number
25 Pairs; OD: 13.0 mm; Packaging: 500 m/Reel	1711494-1
50 Pairs; OD: 16.0 x 29.0 mm; Packaging: 500 m/Reel	1711495-1
100 Pairs; OD: 35.0 mm; Packaging: 500 m/Reel	1711496-1

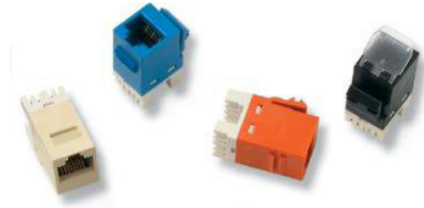
# Modular Twisted Pair

## Voice - Jacks

### SL Series Modular Jack (UTP)

#### FEATURES

- SlimLine (SL) Series: Thin profile improves outlet density
- Category 3
- 90° or 180° cable dress for easy termination
- Bend-limiting strain relief included
- UL listed
- Universal wiring - T568 A or B wiring pattern
- Several colors available on demand



#### ORDERING INFORMATION

Description	Part Number
Cat. 3 RJ-11 unshielded Jack without dust cover	Y-1375192-X

Y- -X	Color
0- -1	Beige
0- -2	Black
0- -6	Blue
1- -3	Alpine White

### SL Series Modular Coupler

#### FEATURES

- Straight Category 3 telephone coupler
- Compact coupler for two modular plugs
- SL Series: Thin profile improves outlet density



#### ORDERING INFORMATION

Description	Part Number
Cat. 3 RJ-11 (6 pos) unshielded Coupler	555050-1
Cat. 3 RJ-45 (8 pos) unshielded Coupler	555052-1

# Modular Twisted Pair

## Voice - Jacks

### SL Series Multimedia Inserts

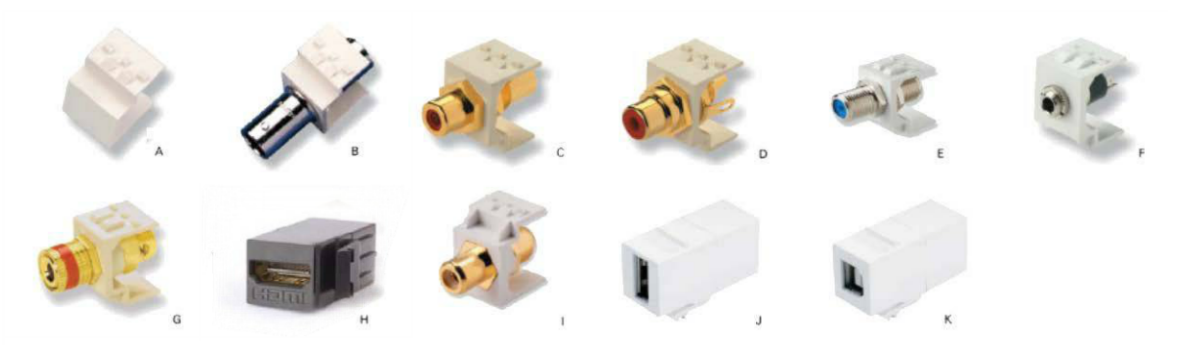
Y- -X	Color
0- -1	Light Almond
0- -2	Black
1- -3	Alpine White

#### FEATURES

- The inserts offer flexibility and density at the work area outlet
- Can be installed in any faceplate or outlet designed to the SL series jack footprint
- Some couplers may not be available in all colors

#### ORDERING INFORMATION

Description	Part Number
ST Coupler; Fiber Type: Multimode	Y-1339123-X
ST Coupler; Fiber Type: Singlemode	Y-1479181-X
BNC Coupler Insert; Figure B	Y-2111615-X
MT-RJ SL Series Housing	Y-1374416-X
RCA Coupler, Red Dielectric	Y-1375361-X
RCA Coupler, White Dielectric	Y-1375362-X
RCA Coupler, Yellow Dielectric	Y-1375363-X
RCA Solder Termination, Red Dielectric	Y-1375364-X
RCA Solder Termination, White Dielectric	Y-1375365-X
RCA Solder Termination, Yellow Dielectric	Y-1375366-X
RCA Coupler, Green Dielectric	Y-1933192-X
RCA Coupler, Blue Dielectric	Y-1933193-X
RCA Coupler, Orange Dielectric	Y-1933194-X
RCA to F-Connector; Figure I	Y-1933096-X
F-Connector Coupler, 2 GHz; Figure E	Y-1499855-X
3.5 mm Stereo Mini-Headphone, Screw Terminal, Figure F	Y-1933582-X
Speaker Post, Black Stripe	Y-1479190-X
Speaker Post, Red Stripe; Figure G	Y-1479191-X
SC Simplex Coupler; Fiber Type: Multimode or Singlemode	Y-1499836-X
LC Coupler; Fiber Type: Singlemode APC; LC Coupler and Housing, Green	1933286-3
LC Coupler; Fiber Type: Singlemode; LC Coupler and Housing, Blue	1933286-4
LC Coupler; Fiber Type: XG LO 850 nm 50/125µm; LC Coupler and Housing, Aqua, OM3 & OM4	1933286-6
LC Coupler; Fiber Type: 50/125µm; LC Coupler and Housing, Black, OM2	1-1933286-1
LC Coupler; Fiber Type: 62.5/125µm; LC Coupler and Housing, Beige, OM1	1-1933286-2
USB A-A Coupler; Figure J	Y-1933659-X
USB B-A Coupler; Figure K	Y-1933661-X
HDMI Coupler Figure H	2111500-2
Blank Insert Figure A	Y-1116412-X



# Modular Twisted Pair

## Voice - Patch Panels

### Category 3 Telephone Patch Panel - fixed

#### FEATURES

- 19", 1U, Telephone Panel with 50 ports
- Prepared for AMPTRAC upgrade
- Active Pin-out: 36,45
- Enhanced 110 IDC blocks compatible with 110C Impact or LSA-PLUS Insertion tool
- Conductor diameter range from AWG 26-22 (0.4-0.65 mm)
- Rear cable management for multipair cables
- 110 IDC blocks for conductor insulation diameters up to 1.28 mm

**Color:** black (RAL 9005)



#### ORDERING INFORMATION

Description	Part Number
Cat. 3; 50 Ports Telephone Patch Panel - fixed; 110C IDC blocks	1394060-2

### Category 3 Telephone Patch Panel - sliding

#### FEATURES

- 19", 1U, Telephone Panel with 25 or 50 ports
- Active Pin-out: 36,45
- Enhanced LSA-PLUS IDC blocks compatible with LSA-PLUS Insertion tool
- Expansive cable management for maximum cable protection
- Innovative sliding panel mechanism for improved ease of installation

**Color:** black (RAL 9005)



#### ORDERING INFORMATION

Description	Part Number
Cat. 3; 25 Ports Telephone Patch Panel - sliding; LSA-PLUS blocks	7022 4 001-25
Cat. 3; 50 Ports Telephone Patch Panel - sliding; LSA-PLUS blocks	7022 4 001-50

# Modular Twisted Pair

## Voice - LSA-PLUS Modules

### LSA-PLUS Series 2 Backmount Disconnection Module

10 pair LSA-PLUS modules which contain two piece contacts normally closed. Has advantage of individual pair disconnection and four wire test access.



#### ORDERING INFORMATION

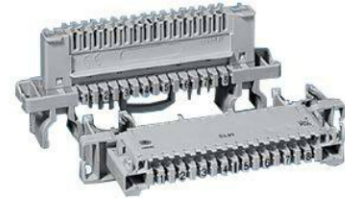
Description	Part Number
LSA-PLUS Backmount Disconnection Module, White, Pack of 10	6089 1 102-02
LSA-PLUS Backmount Disconnection Module, Cream, Pack of 10	6089 1 810-00

### LSA-PLUS PROFIL NT Disconnection Module

Disconnection module for 10 pairs, with right-angled arrangement of the contact rows for distributor systems ensuring enhanced access security. The mounting pitch is only 17.5mm. For installation in PROFIL rack systems with rod spacing 95mm for 10 pairs.

Small jumper guides left and right with built-in earth contact clips.

**Housing colour:** cream white



#### ORDERING INFORMATION

Description	Part Number
LSA-PLUS PROFIL NT Disconnection Module, 10 Pairs	7014 1 601-00

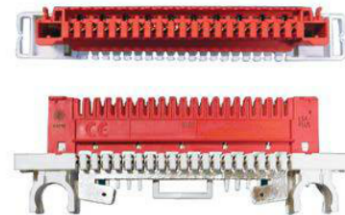
### LSA-PLUS PROFIL NT Earth Module

For connecting drain wires to an earth contact without soldering, wire-stripping or the use of screws.

Designed for universal use with:

- Up to 20 drain wires
- For clicking onto PROFIL frames

**Housing colour:** red



#### ORDERING INFORMATION

Description	Part Number
LSA-PLUS PROFIL NT Earth Module	7014 2 152-00

## Modular Twisted Pair

### Voice - LSA-PLUS Label Holders

#### 10 Pair Label Holder and Labels

Easy identification of terminations and groups of modules. Label holders are available for mounting on 10 pair LSA-PLUS modules and for mounting directly onto the backmount frame. Labels can be ordered separately.



#### ORDERING INFORMATION

Description	Quantity	Part Number
Double Sided Hinged Label Holder Grey	Pack of 10	6092 1 810-00
Label Holder Complete with Label, fits on one position on backmount frame	Pack of 10 Strips	6092 1 820-00
Blank white labels for use with label holders 6092 1 810-00 & 6092 1 840-00	Pack of 100	6534 1 001-00

#### PROFIL Module Label Holder

Designed for universal use with backmount frame and PROFIL rod systems. For vertical identification

Label size: 95 x 18 mm for 2/10

Requires the space of one connection module in the backmount frame / PROFIL rod system.



#### ORDERING INFORMATION

Description	Part Number
PROFIL Module Label Holder	6753 2 009-00

#### LSA-PLUS NT Hinged Label Holder

Hinged label holder for LSA-PLUS NT. Can be inserted directly onto LSA-PLUS NT/PROFIL NT modules for 10 pairs. Comes with paper label and transparent cover. The flammability class of the grey label holder is UL94 V-0



#### ORDERING INFORMATION

Description	Part Number
Hinged Label Holder	7014 2 007-00

# Modular Twisted Pair Voice - LSA-PLUS Frames

## Backmount Frames

Backmount frames in a variety of sizes, suitable for LSA-PLUS Series 2 Modules.



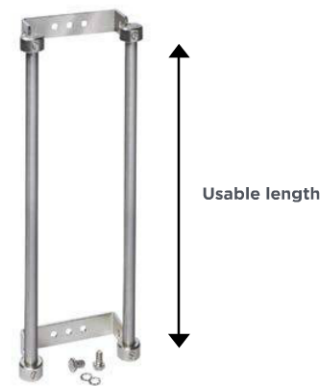
### ORDERING INFORMATION

Description	Quantity	Part Number
11mm Deep, 1 Module	1	6424 3 005-01
11mm Deep, 2 Modules	1	6424 3 005-02
11mm Deep, 7 Modules	1	6424 3 005-07
30mm Deep, 10 Modules	1	6424 3 007-10
50mm Deep, 30 Modules	1	6424 3 009-30
60mm Deep, 34 Modules	1	6424 3 010-34

## PROFIL Frame 95/46

For installation in already set-up distribution frames and distribution cabinets.

- The frame consists of:  
2 PROFIL rods, 12mm in diameter (stainless steel)  
An adequate number of PROFIL holders with a depth of 46mm
- Completely assembled PROFIL frame:  
PROFIL frame 95 for accommodation of LSA PROFIL modules 2/10, 2/8-95, LS 10 pairs and HighBand®



### ORDERING INFORMATION

Description	Part Number
PROFIL Frame 95/46, length of rods 299mm	6577 2 812-01
PROFIL Frame 95/46, length of rods 574mm	6577 2 812-02
PROFIL Frame 95/46, length of rods 861mm	6577 2 812-03
PROFIL Frame 95/46, length of rods 1136mm	6577 2 812-04
PROFIL Frame 95/46, length of rods 1423mm	6577 2 812-05
PROFIL Frame 95/46, length of rods 1698mm	6577 2 812-06

## Modular Twisted Pair

### Voice - LSA-PLUS Connection Cords

---

#### LSA-PLUS Series 2 Connection Cord

Equipped with a plug at each end of the cord. Primarily used for interconnecting separate circuits either on the same or between different LSA-PLUS modules.



#### ORDERING INFORMATION

Description	Quantity	Part Number
2 Pole. For use with LSA-PLUS connection and disconnection modules, cord length 1.5m	Pack of 10	6529 1 022-01
4 Pole. For use with LSA-PLUS switching and disconnection modules, cord length 1.5m	Pack of 10	6529 1 042-01

#### LSA-PLUS NT Connection Cord, 1 Pair

Connection cord with 2 NT plugs. Thanks to the extended length, the plug can be easily gripped even when there are adjacent protection magazines. Designed for LSA-PLUS NT/LSA PROFIL NT disconnection and switching modules; 2-pole connection on the cable side (a to a and b to b).



#### ORDERING INFORMATION

Description	Part Number
LSA-PLUS NT connection cord, 1 pair 2m	7014 2 040-00



## Modular Twisted Pair Voice - LSA-PLUS Protection Plugs

### ComProtect Series B

Compact plug-in single pair overvoltage protection for LSA-PLUS series. ComProtect Series B protects from damage caused by overvoltage with a 3-pole GDT with failsafe (primary circuit) and transient secondary elements (Diodes) for quick responding fine protection. Additional overcurrent protection is realised with reversible thermistors (PTCs) that complete the 5 point protective circuitry. These devices are designed for use in exchanges and terminal equipment in both analogue and ISDN (<2MBps) systems. All include earthing rail.



### ORDERING INFORMATION

Description	Quantity	Part Number
CP BI12A1 - 5 point and transient protection, max. operating voltage is 12V, GDT with failsafe	10	5909 1 084-00
CP BI24A1 - as above, max. operating voltage is 24V	10	5909 1 083-00
CP BI70A1 - as above, max. operating voltage is 70V	10	5909 1 082-00
CP BI180A1 - as above, max. operating voltage is 180V	10	5909 1 076-00
CP BOD180A2 - high GDT clamping voltage (>250V)	10	5909 1 078-10

### NTP OD180A2

Recommended for protection of distribution and terminal equipment in analog, ISDN, HDSL and ADSL telecommunication systems. Designed for the partial or complete equipping of LSA-PLUS NT or LSA PROFIL NT disconnection or switching modules in conjunction with a 10-pair earth bar (Order No.: 7019 3 037-00).

The protection circuit consists of a 3-pole overvoltage arrester, fail-safe contact, reversible overcurrent protection components and diodes for secondary overvoltage protection. The overcurrent protection functions as a reversible line fuse.



### ORDERING INFORMATION

Description	Part Number
NTP OD180A2	7019 1 014-00

## Modular Twisted Pair

### Voice - Indoor Boxes

---

#### Connection Box 201D

Low profile plastic box accommodates up to 20 pairs or 2 LSA-PLUS modules.

Dimensions: 170(H) x 120(W) x 43(D)mm



#### ORDERING INFORMATION

Description	Part Number
Connection Box 201D, 20 Pair	6429 1 076-00
Connection Box 201D, 10 Pair	6429 1 078-00

#### Connection Box 301A

Plastic modular box, for 100 pairs designed to accommodate 10 LSA-PLUS 10 pair modules.

Dimensions: 320(H) x 210(W) x 120(D)mm



#### ORDERING INFORMATION

Description	Part Number
Connection Box 301A (Includes 1 backmount frame 5/30/10A equivalent and earthing)	6530 1 017-00

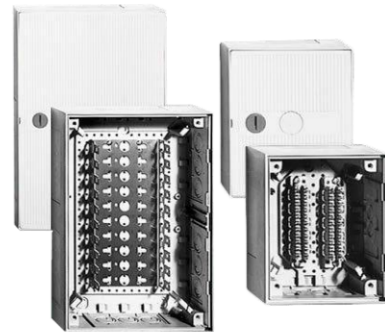
# Modular Twisted Pair

## Voice - Indoor Boxes

### KRONECTION Boxes

#### FEATURES

- Plastic Distribution Box for Surface- and flush-mounted applications
- All KRONECTION boxes (empty housing) can be fitted with LSA-PLUS NT back-mount frames
- KRONECTION boxes with back-mount frames are designed for installation of overvoltage protection elements (additional wall attachment frame required)
- Protection class: IP 30 according to DIN 40050. These distribution boxes are designed for indoor use.
- Flammability class: UL 94V-0



**Color:** RAL 7035 (polystyrene-compatible paintings possible).

#### ORDERING INFORMATION

Description	H x W x D (mm)	Part Number
KRONECTION-Box I (empty)	170 x 140 x 75	6436 1 001-xx
KRONECTION-Box I (outfitted with 1 back-mount frame for 3 LSA-PLUS modules 2/10)	170 x 140 x 75	6436 1 013-xx
Back-mount frame NT for Box I (30 pairs, without label holder)		7014 3 046-13
KRONECTION-Box II (empty)	215 x 215 x 75	6406 1 001-xx
KRONECTION-Box II (outfitted with 1 back-mount frame for 5 LSA-PLUS modules 2/10)	215 x 215 x 75	6406 1 015-xx
Back-mount frame NT for Box II (70 pairs, without label holder)		7014 3 046-12
KRONECTION-Box III (empty)	320 x 215 x 75	6437 1 001-xx
KRONECTION-Box III (outfitted with 1 back-mount frame for 10 LSA-PLUS modules 2/10)	320 x 215 x 75	6437 1 020-xx
Back-mount frame NT for Box III (120 pairs, without label holder)		7014 3 046-11

xx = 20 for door with turnbuckle

xx = 21 for door with cylinder lock and one key

### Accessories for KRONECTION-Box I, II, III

#### FEATURES

- Mounting frames available as flush-mount or for attachment
- Attachment frames for increasing the installation depth by 37 mm for overvoltage protection applications



Flush-mounting frame

#### ORDERING INFORMATION

Description	Part Number
Flush-mounting frame for KRONECTION-Box I	6436 2 004-20
Attachment frame for KRONECTION-Box I	6436 3 003-20
Flush-mounting frame for KRONECTION-Box II	6406 2 004-20
Attachment frame for KRONECTION-Box II	6406 3 003-20
Flush-mounting frame for KRONECTION-Box III	6437 2 004-20
Attachment frame for for KRONECTION-Box III	6437 3 003-20
Cylinder lock for replacing the turnbuckle incl. one key	6437 2 010-00
Jumper pin as wire guide (6 pieces)	6406 2 013-00



Attachment frame

## Modular Twisted Pair Voice - Indoor Boxes

### LSA Connection Boxes

#### FEATURES

- Manufactured from lightweight 1mm mild steel
- Removable top and bottom gland plates and internal jumper rings
- Quick release hinges
- Doors can be hinged either left or right
- Strong, robust and durable solution
- Tidy cable management
- Quick release hinges aid and simplify installations
- Increased flexibility



#### ORDERING INFORMATION

Description	Pairs Capacity	Backmount Frames	Dimensions (mm) WxHxD	Weight (Kg)	Jumper rings	Pack Qty	Part Number.
Connection Box 500 Series	100	1 x 10 way	235x350x115	3.2	4	1	6428 2 421-00
Connection Box 500 Series	200	1 x 20 way	235x700x115	5.2	6	1	6428 2 420-00
Connection Box 500 Series	200	2 x 10 way	425x350x115	5.4	6	1	6428 2 418-00
Connection Box 500 Series	400	2 x 20 way	425x700x115	8.6	9	1	6428 2 419-00
Connection Box 510	340	1 x 34 way	300x1000x140	11	8	1	6428 2 423-00
Connection Box 520	680	2 x 34 way	500x1000x140	17	12	1	6428 2 424-00
Connection Box 530	1020	3 x 34 way	750x1000x140	25	16	1	6428 2 425-00
Connection Box 540	1340	4 x 34 way	1000x1000x140	32	20	1	6428 2 422-00

# Modular Twisted Pair

## Unloaded Hardware - Patch Panels

### UCP Patch Panel Angled and Flushmount

#### FEATURES

- 19" 1U unloaded modular patch panel with support for 4 Quick-Fit Modules
- Angled and flush style panels available
- Modular, rear cable management for both horizontal Copper and Fiber cables
- Accepts Pre-terminated Cu or FO cassettes or Field-terminated Copper modules
- Including grounding bolt



**Color:** black (RAL 9005)

#### ORDERING INFORMATION

Description	Part Number
UCP Patch Panel 1U Angled	1-1671590-1
UCP Patch Panel 1U Flush	1-1671594-1

### Angled 1U Modular Panel (unloaded)

#### FEATURES

- 19" 1U angled modular Patch Panel to be equipped with different Slim Line jacks
- Adjustable & removable rear cable bracket incl. easy to use cable organizing CaRe-clips
- Including grounding bolt



**Color:** black (RAL 9005)

#### ORDERING INFORMATION

Description	Part Number
Angled modular panel UTP	1-1671157-1
Angled modular panel STP	1-1671157-2

# Modular Twisted Pair

## Unloaded Hardware - Patch Panels

### Flushmount AMPTRAC *Ready!* Patch Panel (unloaded)

#### FEATURES

- 19" 1U unloaded flushmount panel to be equipped with different SlimLine jacks
- AMPTRAC *Ready!* version: prepared for AMPTRAC upgrade
- Holds up to 24 SL jacks

**Color:** black (RAL 9005)

#### ORDERING INFORMATION

Description	Part Number
AMPTRAC <i>Ready!</i> unloaded panels for all SL jacks; Color: black (RAL 9005)	1711685-1
AMPTRAC <i>Ready!</i> unloaded panels for all SL jacks; Color: light gray (RAL 7035)	1711685-2



### Flushmount Modular Patch Panel (unloaded)

#### FEATURES

- 19" 1U unloaded flushmount panel to be equipped with different SlimLine jacks
- Suitable for UTP and STP SL Series jacks
- Including grounding bolt

**Color:** black (RAL 9005)

#### ORDERING INFORMATION

Description	Part Number
Flushmount Modular Panel	1-1671183-1



### Flushmount Standard Patch Panels (unloaded)

#### FEATURES

- 19" Standard unloaded flushmount panel to be equipped with different SlimLine jacks
- Accepts up to 24 SL jacks
- Including grounding bolt

#### ORDERING INFORMATION

Description	Part Number
24 port panel; Height: 1U; Color: black (RAL 9005)	336526-1
24 port panel; Height: 1U; Color: light gray (RAL 7035)	336526-4



# Modular Twisted Pair

## Unloaded Hardware - Patch Panels

### Modular Q-Jack Patch Panel (unloaded)

#### FEATURES

- 19" unloaded 1U flushmount patch panel to be used with Q-Jacks (see page 208)
- UTP and STP configuration possible
- Integral cable management bar
- 45° IDC contacts providing secure, gas-tight connections
- Accepts 110 style termination tools
- Universal 568A/B wiring
- Discrete labelling system



#### ORDERING INFORMATION

Description	Part Number
24 port Q-Jack Patch Panel (unloaded)	300001739943
48 port Q-Jack Patch Panel (unloaded)	300001739995
Blank plugs 12 per pack	300001741753

### Modular KM8 Jack Patch Panel (unloaded)

#### FEATURES

- 19" unloaded 1U flushmount patch panel to be used with KM8 Jacks (see pages 207, 212 and 214)
- UTP and STP configuration possible
- Integral cable management bar
- KM8 termination tool
- Discrete labelling system



#### ORDERING INFORMATION

Description	Part Number
24 port KM8 Patch Panel (unloaded)	7022 2 155-24
32 port KM8 Patch Panel (unloaded)	7022 2 155-32

# Modular Twisted Pair

## Unloaded Hardware - Consolidation Box

### Quick-Fit Consolidation Point Box

#### FEATURES

- Wall mount or raised floor use
- Hinged cover with knurled screw
- Low profile (H = 56mm)
- High flexibility, accepts copper and fiber Quick-Fit modules and/or cassettes
- Installer friendly
- Dust resistant
- Easy access for cleaning fiber optic connectors
- Robust construction
- Integrated strain relief feature
- Including grounding bolt

**Color:** Black (RAL 9005)



#### ORDERING INFORMATION

Description	Part Number
Quick-Fit Consolidation Point Box	1-1671414-1

### Unloaded Copper Quick-Fit Modules

- To be equipped with six SL Jacks
- Available for STP and UTP
- Automatic bonding by design
- Labels included

#### ORDERING INFORMATION

Description	Part Number
STP Quick-Fit module	2111093-1
UTP Quick-Fit module	2111117-1
Blank Quick-Fit module	1479698-1





# Modular Twisted Pair

## Unloaded Hardware - Mini-Pods

---

### MiniPods

#### FEATURES

- External mounting points
- Can be passed through standard floor grommets
- Incorporated dust protection on each port
- 3, 4 and 6 port versions available
- Unloaded version for AMP-TWIST jacks (STP & UTP) and SL Series 110C Jacks



#### ORDERING INFORMATION

Description	Part Number
MiniPod Unloaded 3 port w/angled adaptor for AMP-TWIST & SL jacks	2153216-3
MiniPod Unloaded 4 port w/angled adaptor for AMP-TWIST & SL jacks	2153216-4
MiniPod Unloaded 6 port w/angled adaptor for AMP-TWIST & SL jacks	2153216-6

## Modular Twisted Pair

### Unloaded Hardware - Outlets 80 x 80 mm (DIN)

#### DIN Flushmount 3 Port Angled Outlet

##### FEATURES

- 3 port outlet to accept up to 3 SL Series Jacks
- Compatible with standard and designer 50 x 50 faceplates and 80 x 80 frames
- Ports are iconable Links to labeling in by name

##### ORDERING INFORMATION

Description	Part Number
DIN flushmount 3 port angled outlet (incl. 50 x 50 faceplate); Color: almond (RAL 1013)	1711485-1
DIN flushmount 3 port angled outlet (incl. 50 x 50 faceplate); Color: pure white (RAL 9010)	1711485-2
DIN flushmount 3 port angled outlet UP0 (mounting frame only)	1711490-1
DIN flushmount 3 port angled outlet (incl. 50 x 50 faceplate & 80 x 80 frame); Color: almond (RAL 1013)	1711537-1
DIN flushmount 3 port angled outlet (incl. 50 x 50 faceplate & 80 x 80 frame); Color: pure white (RAL 9010)	1711537-2



#### DIN 3 Port Angled Outlet

##### FEATURES

- 3 Port outlet to accept up to 3 SL Series Jacks
- 50 x 50 mm footprint
- Supplied complete with 2 removable / replaceable blanking plates

##### ORDERING INFORMATION

Description	Part Number
50 x 50 mm DIN 3 port angled outlet without plastic frame; Color: almond (RAL 1013)	336613-1
50 x 50 mm DIN 3 port angled outlet without plastic frame; Color: pure white (RAL 9010)	2-336613-1
50 x 50 mm DIN 3 port angled outlet with 80 x 80 mm plastic frame; Color: almond (RAL 1013)	336614-1
50 x 50 mm DIN 3 port angled outlet with 80 x 80 mm plastic frame; Color: pure white (RAL 9010)	2-336614-1

